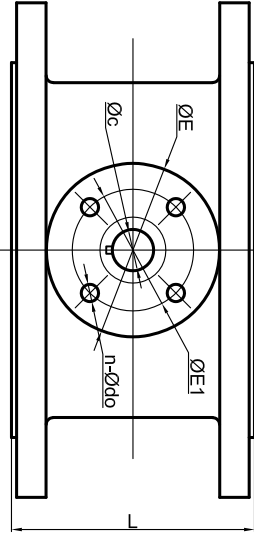


1. Design and manufacture according to API609.
2. Face to face according to EN558-1 13 Series.
3. Flange drilling according to EN1092-2 PN16.
4. Pressure test according to ISO 5208.
5. Top flange drilling according to ISO 5211 .
6. Work prssure: PN16



DN	L	EN1092-2 PN16		H1(Max)	H2(Max)	H3	Top Flange	QE	QE1	n-Ødo	Øc
		ØD1	n-Ød								
50	108	125	4-19	85	115	29	F05	65	50	4-8	12.6
65	112	145	4-19	85	139	29	F05	65	50	4-8	12.6
80	114	160	8-19	100	136	29	F05	65	50	4-8	12.6
100	127	180	8-19	119	155	29	F07	90	70	4-10	15.77
125	140	210	8-19	118	175	29	F07	90	70	4-10	18.92
150	140	240	8-23	144	185	29	F07	90	70	4-10	18.92
200	152	295	12-23	180	215	35	F10	125	102	4-12	22.1
250	165	355	12-28	209	253	35	F10	125	102	4-12	28.45
300	178	410	12-28	254	286	35	F10	125	102	4-12	31.6
350	190	470	16-28	258	317	45	F10	125	102	4-12	31.6
400	216	525	16-31	287	348	51.2	F14	175	140	4-18	33.15
450	222	585	20-31	328	386	51.2	F14	175	140	4-18	38
500	229	650	20-34	353	438	64.2	F14	175	140	4-18	41.15
600	267	770	20-37	421	523	70.2	F16	210	165	4-22	50.65

7	Pin	Stainless steel		
6	Seal Ring	EPDM		
5	Stem Bushing	PTFE		
4	Seat	EPDM		
3	Stem	SS420		
2	Disc	Ductile iron		
1	Body	Ductile iron		
No.	Name of port	Material	Qty	Remark
DRN	Wang	WEIGHT		MATERIAL
CHK		SCALE		
APP		DATE	07/23/2024	Butterfly Valve

Hiwa

B70F-YX

REV 20240723A